

Peddars Way



Modern, four bedroom detached property
Built to the popular 'Roseberry' design
Spacious and attractive throughout
Sought after 'Rings' development of Ingleby Barwick
'Master' with ensuite

£250,000

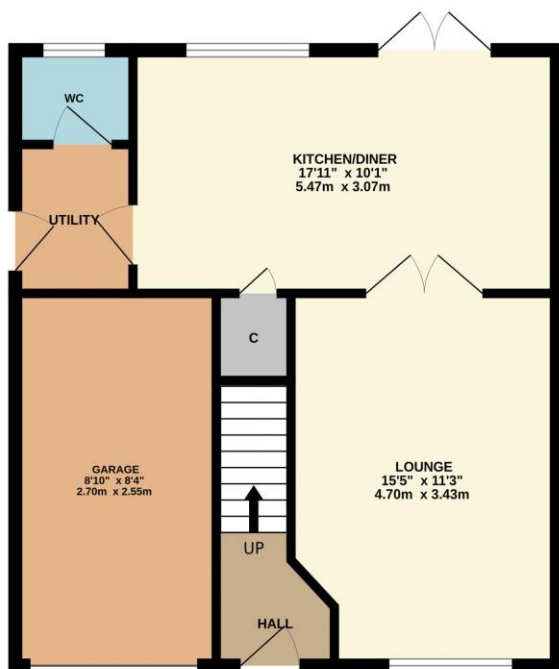


Multi-Award Wining

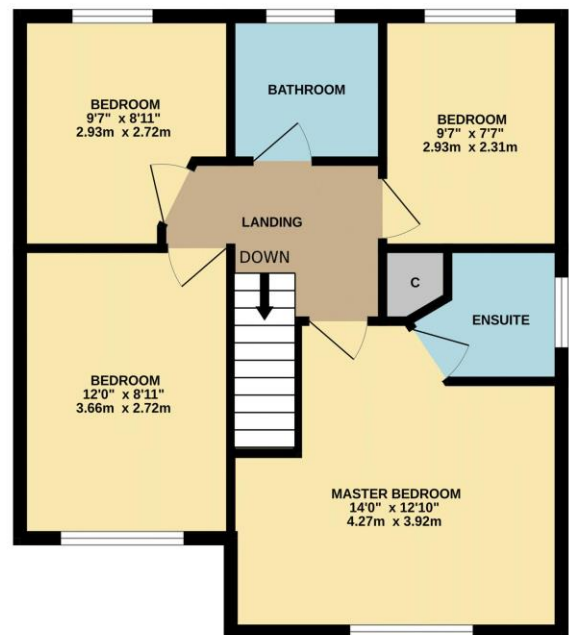
Situated within this newer, and very popular 'Rings' area of Ingleby Barwick, this impressive four bedroom property certainly deserved early inspection. Built to the desirable 'Roseberry' design, modern and neutral throughout.

The superb open-plan kitchen/diner is a particular feature, within a ground floor that also delivers an entrance hall, lounge, utility and cloakroom/WC. The first floor brings four good bedrooms, 'Master' with ensuite, whilst bedroom two enjoys fitted sliding robes. Separate family bathroom. Off road parking is available via the double width front drive, which also approaches the garage, complimented by the enclosed rear garden, with lawn and patio.

GROUND FLOOR



1ST FLOOR



Whilst every attempt has been made to ensure the accuracy of the floorplan contained here, measurements of doors, windows, rooms and any other items are approximate and no responsibility is taken for any error, omission or mis-statement. This plan is for illustrative purposes only and should be used as such by any prospective purchaser. The services, systems and appliances shown have not been tested and no guarantee as to their operability or efficiency can be given.
Made with Metropix ©2024

“The Ingleby Barwick Experts”





Tenure: Freehold

Council Tax Band: D

EPC Rating: B



AGENTS NOTE: Every care has been taken with the preparation of these details, but they are for general guidance only. Measurements and dimensions are approximate, and any fixtures or fittings shown in photography does not infer that they are to be included within the sale. The agent has not tested any appliances or supplies and professional verification of these should be sought prior to purchase if required. These particulars do not constitute a contract or part of a contract.